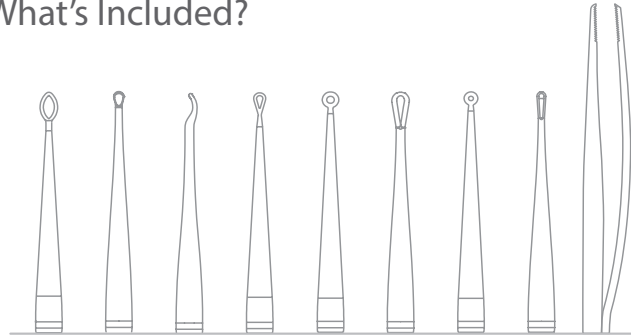
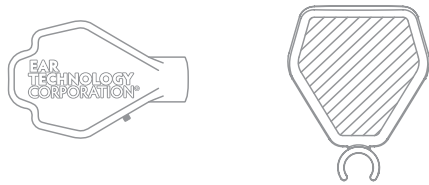


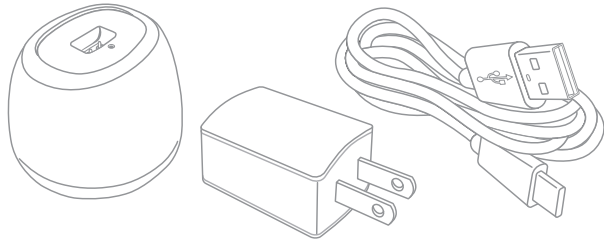
What's Included?



Six each of 8 DIFFERENT CURETTES + two TWEEZERS



LIGHT SOURCE AND MAGNIFIER



CHARGER, POWER ADAPTER, USB CABLE



lightbeamearcurettes.com



CE



LightBeam Ear Cures | 1-800-327-8547 | info@eartech.com



Ear Technology Corporation warrants specific components (charging base, charging block, cable, and light source) of this product against any defects that are due to faulty material or workmanship for one (1) year from the date of purchase. A purchase receipt or other proof of date of the original purchase is required for service under this agreement, otherwise the date of manufacture will be used. Ear Technology Corporation will, at its sole discretion, repair or provide a new or refurbished unit. The exchange unit is warranted for the remainder of the original warranty.

This warranty only covers failures due to defects in materials or workmanship which occur during normal use. It does not cover failures which result from accident, misuse, abuse, neglect, mishandling, misapplication, improper cleaning, line power surge or damage that is attributable to acts of God. Warranty is void on any unit that has been modified or tampered with.

Limitation: Ear Technology Corporation shall not be liable for incidental or consequential damages resulting from use of this product, or arising out of any breach of this warranty, all express and implied warranties, including the warranties of merchantability and fitness for a particular purpose, are limited to the applicable warranty period set forth above.

This warranty gives you specific rights, and you may also have other rights which vary by state or other government jurisdiction.

To obtain service contact Ear Technology Corporation. 1-800-327-8547 info@eartech.com



Helping people hear better, every day.

Ear Technology Corporation's Johnson City facilities have a Quality Management System certified to ISO 9001:2015 for the Design, Manufacture, Sale, and Distribution of Hearing Healthcare Products.

Certified—Service Disabled Veteran Owned Small Business

P.O. Box 1017
Johnson City, TN 37605 USA

eartech.com/patents

LBEC INS 0122 Rev B

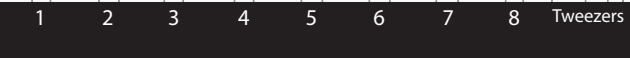
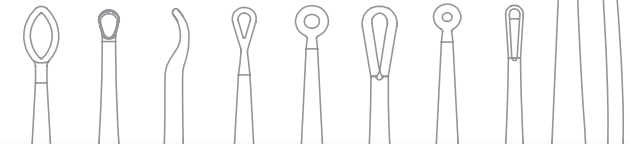


RECHARGEABLE

PATENTED

Lighted Ear Cures and Tweezers
with Magnification

USER INSTRUCTIONS



ITEM NUMBERS FOR REORDER

- | | |
|-----------------------------|-----------------------------|
| 1 LIGHTED OVAL LOOP | 6 LIGHTED LARGE SPOON |
| 2 LIGHTED SMALL SPOON | 7 LIGHTED SMALL CIRCLE LOOP |
| 3 LIGHTED SCOOP | 8 LIGHTED NARROW SPOON |
| 4 LIGHTED SMALL TRI-LOOP | 9 LIGHTED TWEEZERS |
| 5 LIGHTED LARGE CIRCLE LOOP | |

Another quality product by



lightbeamearcurettes.com

USER INSTRUCTIONS



Fully charge the LightBeam light source before proceeding to assembly.

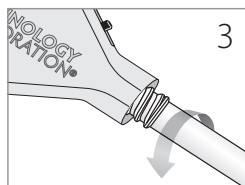
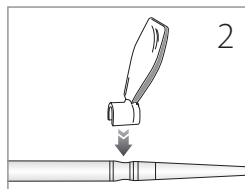
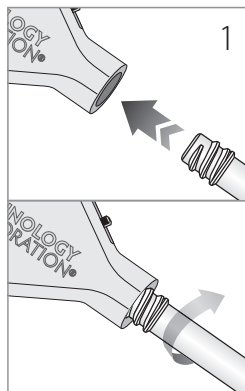
Assembly / Disassembly

1. To assemble the lighted curette, insert the threaded end of a curette into the light source by aligning the threaded curette end with the grooves inside the light source. Twist clockwise until rotation stops. This will lock the curette into place with no concerns over accidental ejection. The tweezer attaches in the same manner.

Notice the light source has an on/on switch on the side.

2. If magnification is used, attach the magnification lens, snap the lens onto the curette indentation, so that the top of the lens angles toward the ear curette tip.

3. To disassemble, rotate the disposable curette counterclockwise to remove the curette from the light source. Discard curette and place light source on the charger.



Instructions for Cerumen Removal

The intended use of the lighted ear cures is to remove cerumen from the ear canal and must be used by a licensed professional.

1. Use an otoscope to examine the ear canal and determine cerumen location.
2. Select the appropriate style ear curette for the type of patient and cerumen occlusion. Assemble according to the instructions.
3. Turn on the power using the switch on the side of the light source.
4. Use the ear curette to remove cerumen from the ear canal.
5. Repeat otoscopic exam. Determine location of any remaining cerumen.
6. Repeat curettage procedure until sufficient cerumen is removed to allow adequate visualization of the tympanic membrane.
7. Turn off the power to the light source.
8. Disassemble the ear curette, and discard the used curette. The rechargeable light source should be placed in the charging base when not in use.



CAUTION

Discontinue curettage immediately if bleeding, irritation, or other trauma to the ear canal or tympanic membrane occurs.

📺 VIDEOS AVAILABLE ON OUR WEBSITE

Recharging the Battery

LightBeam comes with a charging base, power adapter and power cable. The USB cable provided has a type-C connector on one end that plugs into the charging base. The opposite end of the cable has a full-size USB connector. Plug this cable into adapter then connect with power source.

Turn off the power to the light source using the switch on the side.

Place the light source in the charging base.

The light source will glow blue while charging. When fully charged, the light source will glow green.

CHARGING TIME / BATTERY LIFE

Time to fully charge	30 minutes
Battery life at full charge	Approximately 50 minutes

Light source should be placed in the charging base when not in use.



BATTERY DISPOSAL

Lithium-ion batteries and devices containing these batteries should NOT go in household garbage or recycling bins.

Lithium-ion batteries SHOULD be taken to separate recycling or household hazardous waste collection points.

To prevent fires, tape battery terminals and/or place lithium-ion batteries in separate plastic bags.